



Model

1346

Revision 8.1 Updated Sept 6, 2012

Technical Manual & Parts Lists



From the library of: Diamond Needle Corp

Atlanta Attachment Company

362 Industrial Park Drive

Lawrenceville, GA 30046

770-963-7369 • www.atlatt.com

ATLANTA ATTACHMENT COMPANY, INC.

Confidential and Proprietary Information

The materials contained herein are confidential and proprietary information of Atlanta Attachment Company. In addition to any confidentiality and non-disclosure obligations that currently exist between you and Atlanta Attachment Company, your use of these materials serves as an acknowledgment of the confidential and proprietary nature of these materials and your duty not to make any unauthorized use or disclosure of these materials.

All materials contained herein are additionally protected by United States Copyright law and may not be used, disclosed, reproduced, distributed, published or sold without the express written consent of Atlanta Attachment Company, which consent may be withheld in Atlanta Attachment Company's sole discretion. You may not alter or remove any copyright, trademark or other notice from copies of these materials.

Patents & Patents Pending

The sale of this product does not sell or otherwise transfer any license or other rights under any U.S. Patent or other corresponding foreign patent.

This equipment is manufactured under one or more of the following patents:

4,280,421 • 4,432,294 • 4,466,367 • 4,644,883 • 5,134,947 • 5,159,889 • 5,203,270 • 5,373,798 • 5,437,238 • 5,522,332 • 5,524,563 • 5,562,060 • 5,634,418 • 5,647,293 • 5,657,711 • 5,743,202 • 5,865,135 • 5,899,159 • 5,915,319 • 5,918,560 • 5,924,376 • 5,979,345 • 6,035,794 • 6,055,921 • 6,202,579 • 6,279,869 • 6,295,481 • 6,494,225 • 6,523,488 • 6,574,815 • 6,802,271 • 6,834,603 • 6,968,794 • 6,994,043 • 7,543,364 • 7,574,788 • 7,647,876 • 7,735,439

Foreign Patents: 9-520,472 • 0,537,323 • 92,905,522.6 • 96,936,922.2 • 2,076,379 • 2,084,055
Other U.S. and Foreign Patents Pending.

IMPORTANT

It is important to read and understand the information contained within this manual before attempting to operate the machine. Atlanta Attachment Co., Inc. shall not be held liable for damage resulting from misuse of the information presented within, and reserves the right to change the information contained within, without prior notification.

Contents

Important Safety Instruction	1
Liability	2
Safety Equipment on the Machines	3
Protective Eyewear	4
Important Notices.....	5
Maintenance	6
Repair	7
A Word to the End User.....	7
Safety Precautions.....	7
Features	8
Adjusting the Table Height.....	9
Assembly Drawings & Parts Lists	11
11346A Adjustable Build-up Table	12
1346168 Base Sub Assembly	13
1346-1021 Upper Support.....	14
1346-1000A Build-up Table Base Frame	15
13461200A Adjustable Table	16
11346C Crip Size Build-up Table.....	17
11346D Drop Leaf Build-up Table.....	18
1345016 Square Table Lift Assembly	19
11346DR Rotating Drop leaf Build-up Table.....	20
1346060 Rotating Base Weldment	21
11346F Full Size Build-up Table.....	22
11346FE Foam Encap Build-up Table	23
11346K King Size Build-up Table	24
11346Q Queen Size Build-up Table.....	25
11346QK Queen / King Build-up Table.....	26
1346038 Queen / King Table Top	27
11346TW Twin Size Build-up Table.....	28

Important Safety Instruction



This part of the Instruction Material is provided for the safe use of your equipment. It contains important information to help work safely with the unit and describes the dangers inherent in machinery. Some of these dangers are obvious, while others are less evident.

Mandatory Information

All persons operating and/or working on the 1346 should read and understand all parts of the Safety Instructions. This applies, in particular, for persons who only operate and/or work on the unit occasionally (e.g. for maintenance and repair). Persons who have difficulty reading must receive particularly thorough instruction.

Scope of the Instruction Material

- The Instruction Material comprises:
- Safety information
- Operator Instructions

And may also include;

- A list of recommended spare parts
- Instruction Manual(s) for components made by other manufacturers
- The layout and installation diagram containing information for installation

Intended Use

Our machines are designed and built in line with the state of the art and the accepted safety rules. However, all machines may endanger the life and limb of their users and/or third parties and be damaged or cause damage to other property, particularly if they are operated incorrectly or used for purposes other than those specified in the Instruction Manual.

Exclusion of Misuse



Non-conforming uses include, for example, using the equipment for something other than it was designed for, as well as operation without duly installed safety equipment. The risk rests exclusively with the end user.

Conforming use of the machine includes compliance with the technical data, information and regulations in all parts of the complete Instruction Material, as well as compliance with the maintenance regulations. All local safety and accident prevention regulations must also be observed.

Liability

The machine should only be operated when in perfect working order, with due regard for safety and the potential dangers, as well as in accordance with the Instruction Material. Faults and malfunctions capable of impairing safety should be remedied immediately. We cannot accept any liability for personal injury or property damage due to operator errors or non-compliance with the safety instructions contained in this booklet. The risk rests exclusively with the end user.

The Instruction Material should always be kept near the machine so that it is accessible to all concerned.

The local, general, statutory and other binding regulations on accident prevention and environmental protection must also be observed in addition to the Instruction Material. The operating staff must be instructed accordingly. This obligation also includes the handling of dangerous substances and provision/use of personal protective equipment.

The Instruction Material should be supplemented by instructions, including supervisory and notification duties with due regard for special operational features, such as the organization of work, work sequences, the personnel deployed, etc.

The personnel's awareness of the dangers and compliance with the safety regulations should be checked at irregular intervals.

Choice and Qualification of Personnel

Ensure that work on the machine is only carried out by reliable persons who have been appropriately trained for such work - either within the company, by our field staff or at our office - and who have not only been duly appointed and authorized, but are also fully familiar with the local regulations. Work on the machine should only be carried out by skilled personnel, under the management and supervision of a duly qualified engineer.

This not only applies when the machine is used for production, but also for special work associated with its operation (start-up and maintenance), especially when it concerns work on the hydraulic or electrical systems, as well as on the software/serial bus system.

Training

Everyone working on or with the machine should be duly trained and informed with regard to correct use of the safety equipment, the foreseeable dangers which may arise during operation of the machine and the safety precautions to be taken. In addition, the personnel should be instructed to check all safety mechanisms at regular intervals.

Responsibilities

Clearly define exactly who is responsible for operating, setting-up, servicing and repairing the machine. Define the responsibilities of the machine operator and authorize him to refuse any instructions by third parties if they run contrary to the machine's safety. This applies in particular for the operators of machines linked to other equipment. Persons receiving training of any kind may only work on or with the machine under the constant supervision of an experienced operator. Note the minimum age limits permitted by law.

A Word to the Operator

The greatest danger inherent in our machines: is that of fingers, hands or loose clothing being drawn into a machine by live, coasting or rotating tools or assemblies or of being cut by sharp tools or burned by hot elements.

ALWAYS BE CONSCIOUS OF THESE DANGERS!

Safety Equipment on the Machines



All machines are delivered with safety equipment, which shall not be removed or bypassed during operation.

The correct functioning of safety equipment on machines and systems should be checked every day and before every new shift starts, after maintenance and repair work, when starting up for the first time and when restarting (e.g. after prolonged shutdowns).

If safety equipment has to be dismantled for setting-up, maintenance or repair work, such safety equipment shall be replaced and checked immediately upon completing the maintenance or repair work. All protective mechanisms shall be fitted and fully operational whenever the machine is at a standstill or if it has been shut down for a longer period of time.

Damage

If any changes capable of impairing safety are observed in the machine or its mode of operation, such as malfunctions, faults or changes in the machine or tools, appropriate steps must be taken immediately. The machine should be examined for obvious damage and defects at least once per shift. Damage found shall be immediately remedied by a duly authorized person before resuming operation of machine.

The machine should only be operated when in perfect working order and when all protective mechanisms and safety equipment, such as detachable protective mechanisms, emergency STOP systems, etc. are in place and operational.

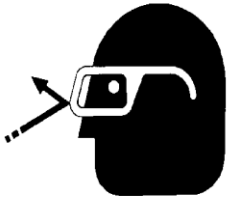
Signs on the Machine

Safety and danger signs on the machine should be observed and checked at regular intervals to ensure that they are complete and undamaged. They should be clearly visible and legible at all times.

Clothing, Jewelry, Protective Equipment

Long loose hair, loose-fitting clothes, gloves and jewelry, including rings, should be avoided in order to avoid injuries due to being caught, drawn in and wound up inside the machine.

Protective Eyewear



Protective eyewear that has been tested by the local authorities should be worn whenever there is a possibility of loose or flying objects or particles such as when cleaning the machine with compressed air.

Tools

Always count the number of tools in your possession before starting work on the machine. This will allow you to check that no tools have been left behind inside the machine. Never leave a tool in the machine while working.

Oils, Lubricants, Chemicals

Note the applicable safety regulations for the product used.

No Smoking, Fire, Explosion Hazard

Smoking and open flame (e.g. welding work) should be prohibited in the production area due to the risk of fire and explosions.

Workplace

A clear working area without any obstructions whatsoever is essential for safe operation of the machine. The floor should be level and clean, without any waste.

The workplace should be well lit, either by the general lighting or by local lights.

First Aid

1. Keep calm even when injured.
2. Clear the operator from the danger zone. The decision of what to do and whether to seek additional assistance rests entirely with you, particularly if someone has been trapped.
3. Give First Aid. Special courses are offered by such organizations as the employers' liability insurance association. Your colleagues should be able to rely on you and vice versa.
4. Call an ambulance. Do you know the telephone numbers for the ambulance service, police and fire service?

Important Notices

Reporting and Fighting Fires

Read the instructions posted in the factory with regard to reporting fires and the emergency exits. Make sure you know exactly where the fire extinguishers and sprinkler systems are located and how they are operated. Pass on the corresponding information to the firemen when they arrive. Ensure there are enough signs to avoid fire hazards.

The following fire extinguishers may be used:

- Dry powder extinguishers, ABC fire-extinguishing powder.
- Carbon dioxide fire extinguishers to DIN 14461 for electronic components. Great care must be exercised when using carbon dioxide fire extinguishers in confined, badly ventilated rooms (see DIN 14406 and 14270).

Delivery of the Machine/Packaging

Note any markings on the packaging, such as weights, lifting points and special information. Avoid temperature fluctuations. Condensation may damage the machine.

Transport Damage

The packaging and machine must immediately be examined for signs of damage in transit. Such damage must be reported to the shipper/transporter within the applicable time limits. Contact Atlanta Attachment Company and/or your transport insurer immediately, if signs of damage are visible. Never operate a damaged machine.

Interim Storage

If the machine has to be stored temporarily, it must be oiled or greased and stored in a dry place where it is protected from the weather in order to avoid damage. A corrosion-inhibiting coating should be applied if the machine has to be stored for a longer period of time and additional precautions taken to avoid corrosion.

Transporting the Machine

Disconnect the machine from all external connections and secure any loose assemblies or parts. Never step under a suspended load. When transporting the machine or assemblies in a crate, ensure that the ropes or arms of a forklift truck are positioned as close to the edge of the crate as possible. The center of gravity is not necessarily in the middle of the crate. Note the accident prevention regulations, safety instructions and local regulations governing transport of the machine and its assemblies.

Only use suitable transport vehicles, hoisting gear and load suspension devices that are in perfect working order and of adequate carrying capacity. Transport should only be entrusted to duly qualified personnel.

Never allow the straps to rest against the machine enclosure and never push or pull sensitive parts of the machine. Ensure that the load is always properly secured. Before or immediately after loading the machine, secure it properly and affix corresponding warnings.

All transport guards and lifting devices must be removed before the machine is started up again. Any parts that are to be removed for transport must be carefully refitted and secured before the machine is started up again.

Workplace Environment

Our machines are designed for use in enclosed rooms: Permissible ambient temperature approx. 5 - 40 °C (40 - 104 °F). Malfunctions of the control systems and uncontrolled machine movements may occur at temperatures outside this range.

Protect against climatic influences, such as electrostatic charges, lightning strikes, hail, storm damage, high humidity, salinity of the air in coastal regions.

Protect against influences from the surroundings: no structure-borne vibrations, no grinding dust, or chemical vapors.

Protect against unauthorized access.

Ensure that the machine and accessories are set up in a stable position.

Ensure easy access for operation and maintenance (Instruction Manual and layout diagram); also verify that the floor is strong enough to carry the weight of the machine.

Local Regulations

Particular attention must be paid to local and statutory regulations, etc. when installing machines and the plant (e.g. with regard to the specified escape routes). Note the safety zones in relation to adjacent machines.

Maintenance

General Safety Instructions

Remove any oil, grease, dirt and waste from the machine, particularly from the connections and screws, when starting the maintenance and/or repair work. Do not use any corrosive-cleaning agents. Use lint-free rags.

Retighten all screw connections that have to be loosened for the maintenance and repair work. Any safety mechanisms that have to be dismantled for setting-up, maintenance or repair purposes must be refitted and checked immediately after completing the work.

Maintenance, Care, Adjustment

The activities and intervals specified in the Instruction Manual for carrying out adjustments, maintenance and inspections must be observed and parts replaced as specified.

Waste, Disassembly, Disposal

Waste products should be cleared from the machine as soon as possible as not to create a fire hazard. Ensure that fuels and operating lubricants, as well as replacement parts are disposed of in a safe and ecologically acceptable manner. Note the local regulations on pollution control.

When scrapping (disassembling) the machine and its assemblies, ensure that these materials are disposed of safely. Either commission a specialist company familiar with the local regulations or note the local regulations when disposing of these materials yourself. Materials should be sorted properly.

Repair

Replacement Parts

We cannot accept any liability whatsoever for damage due to the use of parts made by other manufacturers or due to unqualified repair or modification of the machine.

General Liability

Liability for machine damage and personal injury is extinguished completely if any unauthorized conversions or modifications are undertaken. The machine must not be modified, enlarged or converted in any way capable of affecting safety without the manufacturer's prior approval.

Starting Machine Movements

Read the Instruction Manual carefully to establish which keys and functions start machine movements.

A Word to the End User

The end user has sole responsibility to enforce the use of safety procedures and guards on the machine. Any other safety devices or procedures due to local regulations should be should be retrofitted in accordance to these regulations and/or the EC Directive on the safety of machines. Operator's position must always be readily accessible. Escape routes must always be kept clear and safety areas should be identified.

Safety Precautions

Safety should be a constant concern for everyone. Always be careful when working with this equipment. While normal safety precautions were taken in the design and manufacture of this equipment, there are some potential safety hazards.

Everyone involved with the operation and maintenance of this equipment should read and follow the instructions in this manual.

Operate the equipment only as stated in this manual. Incorrect use could cause damage to the equipment or personal injury.

It is the owner's responsibility to make certain that the operator reads and understands this manual before operating this equipment. It is also the owner's responsibility to make certain that the operator is a qualified and physically able individual, properly trained in the operation of this equipment.

Specific safety warning decals are located on the equipment near the immediate areas of potential hazards. These decals should not be removed or obliterated. Replace them if they become non-readable.

- ALWAYS operate equipment in daylight or with adequate working lights.
- Follow daily and weekly checklists, making sure hoses are tightly secured and bolts are tightened.
- NEVER operate a poorly maintained machine.
- NEVER allow persons to operate this machine without proper instruction.
- NEVER put hands or feet under any part of the machine while it is running.
- NEVER attempt to make any adjustments or repairs to the machine while running. Repairs or maintenance should be performed by trained personnel only.
- NEVER work under the machine unless it is safely supported with stands, blocks or a hoist and blocks.

The 1346 unit is available in 10 sizes depending on bedding requirements.

Model #:	Size	:	Page:
1346A	Adjustable	:	12
1346C	Crib Size	:	17
1346D	Drop Leaf	:	18
1346DR	Rotating Drop Leaf	:	20
1346F	Full Size	:	22
1346FE	Foam End Cap	:	23
1346K	King Size	:	24
1346Q	Queen Size	:	25
1346QK	Queen/King Size	:	26
1346TW	Twin Size	:	28



From the library of: Diamond Needle Corp

Features

- Rugged Construction
- Stainless Steel Top
- Shelf For Supplies
- Adjustable Height
- Stationary Or Rotary
- Low Cost - Long Lasting
- Pneumatic Table Lift Optional
- Quick Release Locking Mechanism

Adjusting the Table Height

A minimum of 3 people is required to safely raise and/or lower the table.

To adjust the height of the table top:

1. Position 1 person at each end of the table top prepared to hold the table top.
2. Disengage the handle (Item 4) by pulling and turning 180° counter clock-wise so that the dowel pin is positioned on the outer edge of the tube bushing.
3. Disengage the hitch pin (Item 3, Figure 1).
4. With two people supporting the weight of the table top, loosen the two screws in the clamp collar (Item 1).

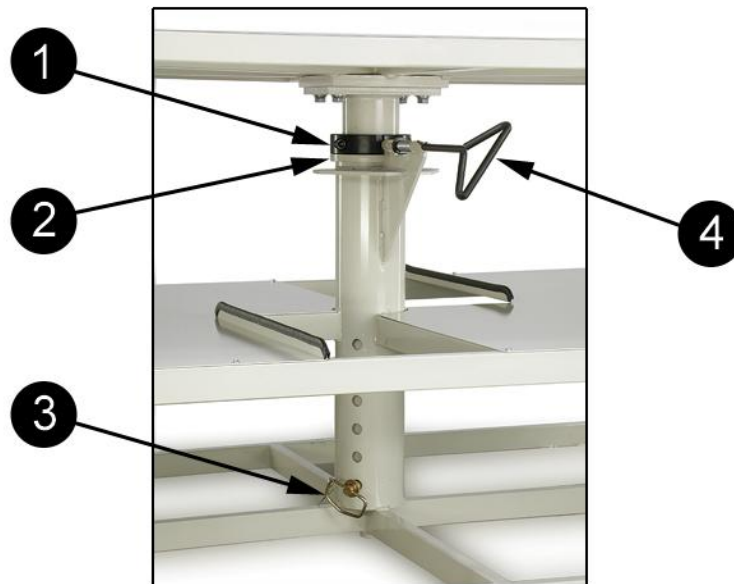
Caution! When working under the table top, keep head and hands below the level of the handle (Item 4). Failure to do so could result in injury if the table top should fall.

5. Instruct the 2 people holding the table top to raise/lower the table top to the desired height.
6. Insert the hitch pin (Item 3) into the hole in the column closest to the bottom of the table support column.
7. Set the table top down until the table support column is resting on the hitch pin (Item 3).
8. Lock the clamp collar down (Item 1) so that it is resting level on the main support column.
9. Rotate the table top until the handle (Item 4) is locked in the channel of the clamp collar (Item 1).

Note: The clamp collar (Item 1) can be rotated and locked so that the stationary position of table top can be adjusted.

Note: If the table top does not rotate freely, apply grease between the clamp collar and the support column.

Figure 1

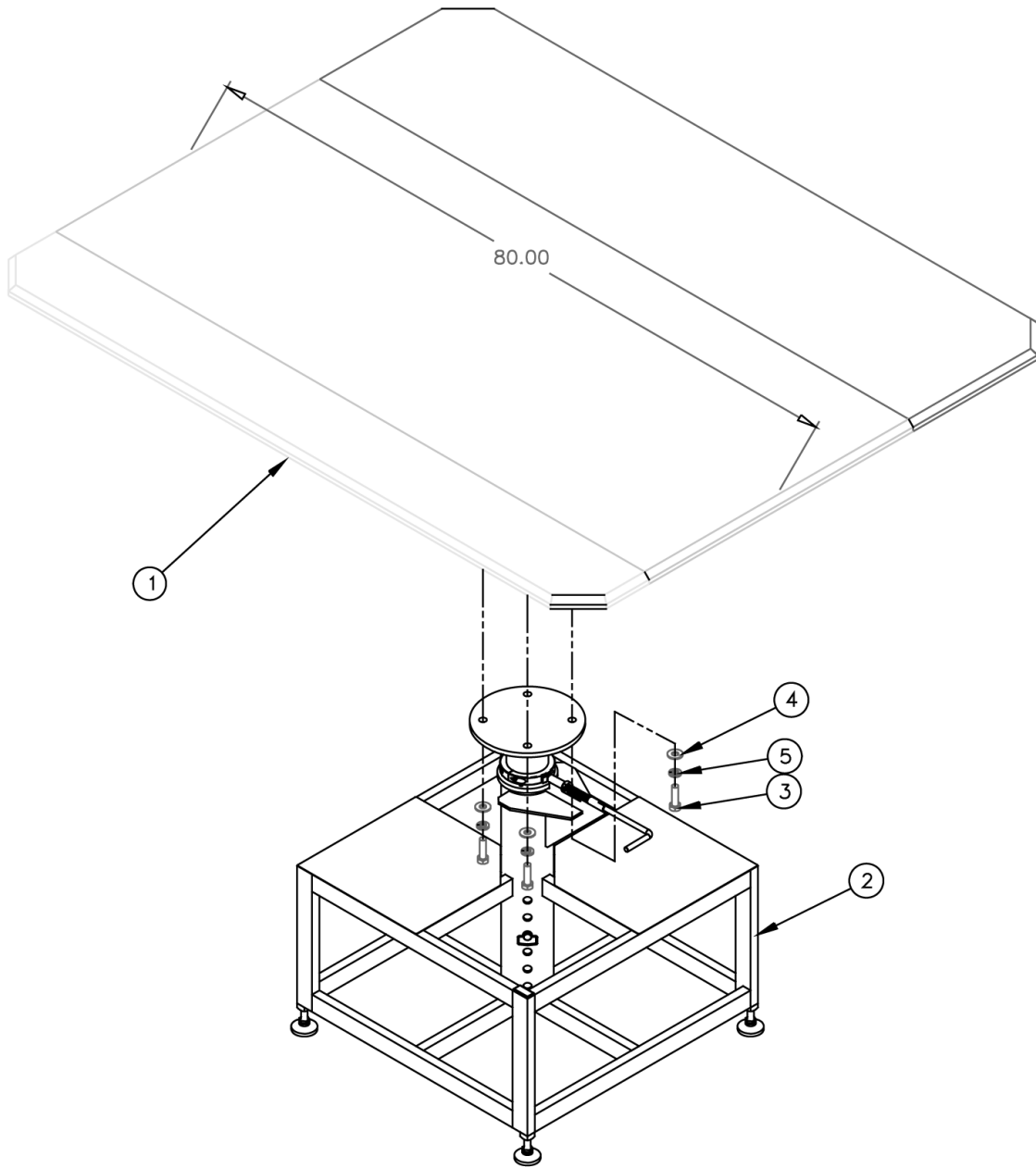


Assembly Drawings & Parts Lists

The materials contained herein are confidential and proprietary information of Atlanta Attachment Company. In addition to any confidentiality and non-disclosure obligations that currently exist between you and Atlanta Attachment Company, your use of these materials serves as an acknowledgment of the confidential and proprietary nature of these materials and your duty not to make any unauthorized use or disclosure of these materials.



One-Stop Shopping
For Expendable Replacement Parts for AAC & Other Bedding Equipment Suppliers
Toll Free: **1-866-885-5100**
www.atlantapartsdepot.com • sales@atlantapartsdepot.com



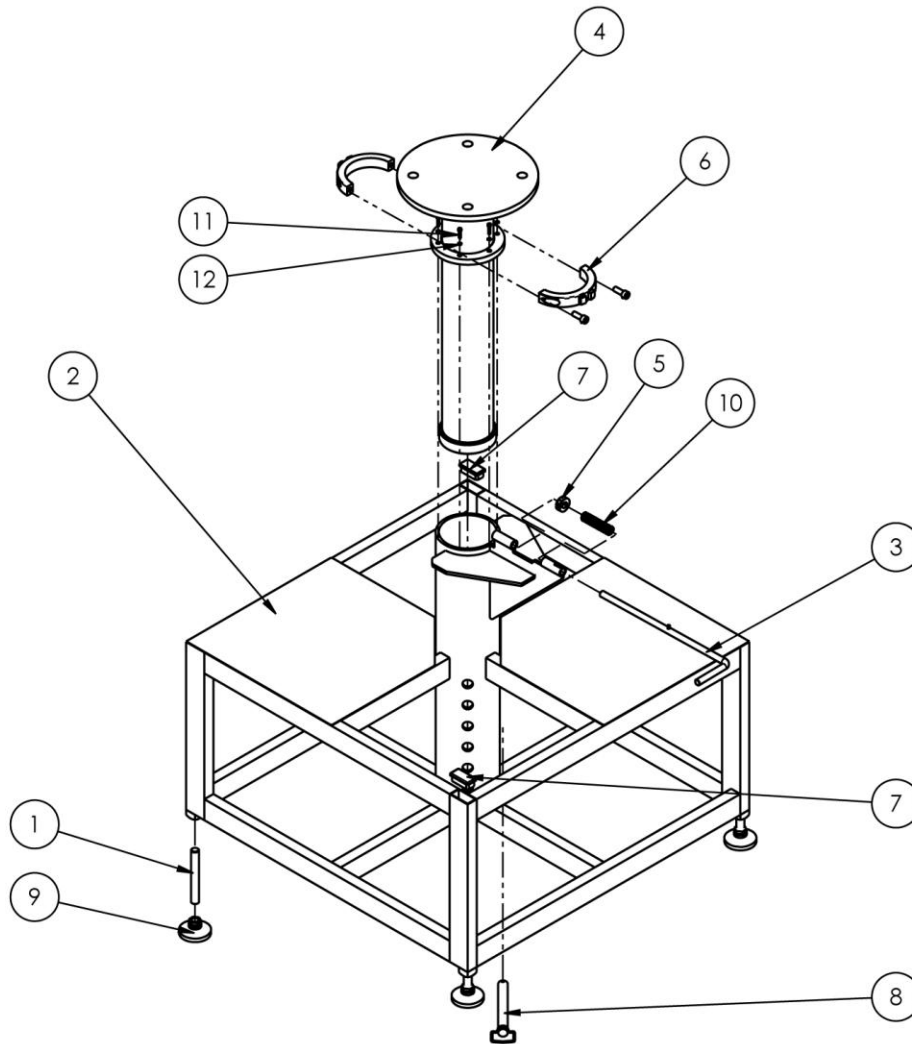
From the library of: Diamond Needle Corp

11346A Adjustable Build-up Table

AAC Drawing Number 192943B Rev 3

NO.	QTY	PART #	DESCRIPTION
1	1	13461200A	Table Top Frame Assy.
2	1	1346168	Base Sub Assy.
3	4	SSH45080	Hex Cap Screw
4	4	WWF1/2	Flat Washer
5	4	WWL1/2	Lock Washer

Page 16



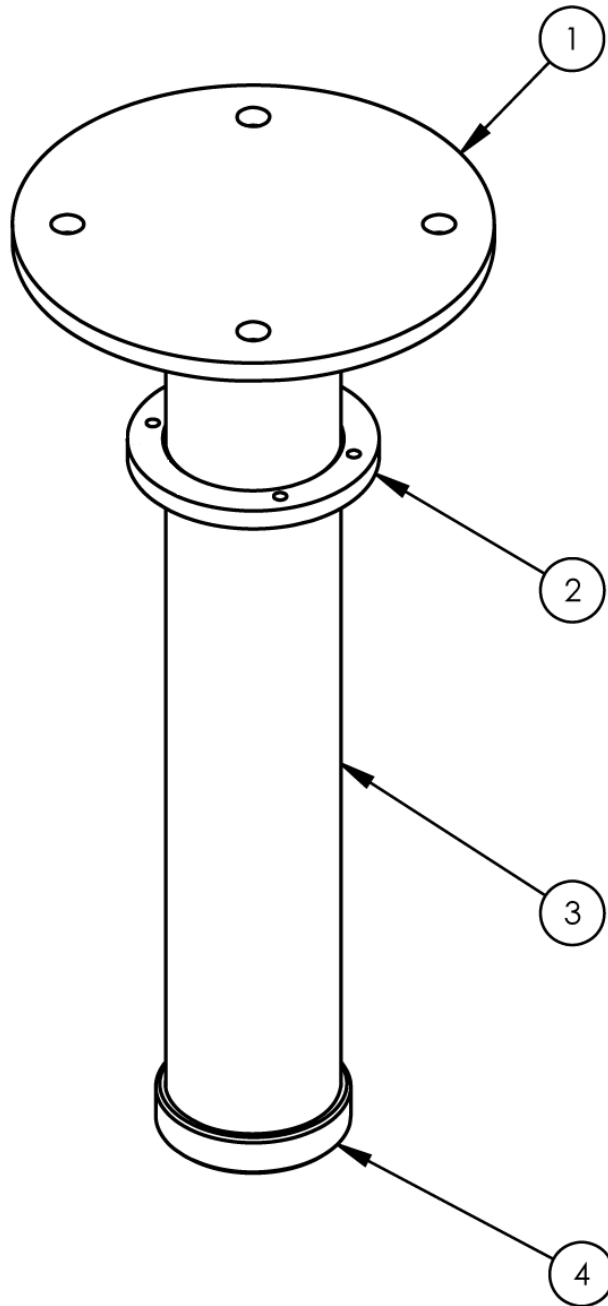
From the library of: Diamond Needle Corp

1346168 Base Sub Assembly

AAC Drawing Number 1346168 Rev 0

NO.	QTY	PART #	DESCRIPTION
1	4	0411-1063	ROD, THREADED, 5/8-11 X 5
2	1	1346-1000A	FRAME.BASE,BUILD UP TABLE
3	1	1346-1012	HANDLE W/ KEY
4	1	1346-1021	SUPPORT, UPPER
5	1	CCCL8F	CLAMP COLLAR- 1/2
6	1	CCSPH64FM	CLAMP,4" COLLAR,MOD
7	2	MM132-1496	PLUG 1 X 2
8	1	MM98412A231	PIN,HITCH,3/4 DIA X 6-1/4 L
9	4	MML-2	LEVELING PAD, 5/8-11
10	1	RRLC105J10	SPRING,COMP .105X.75X3.0
11	6	SSSC90048	#8-32 X 3/4 SOC CAP SC
12	6	WWL8	WASHER,LOCK,#8

Page 15

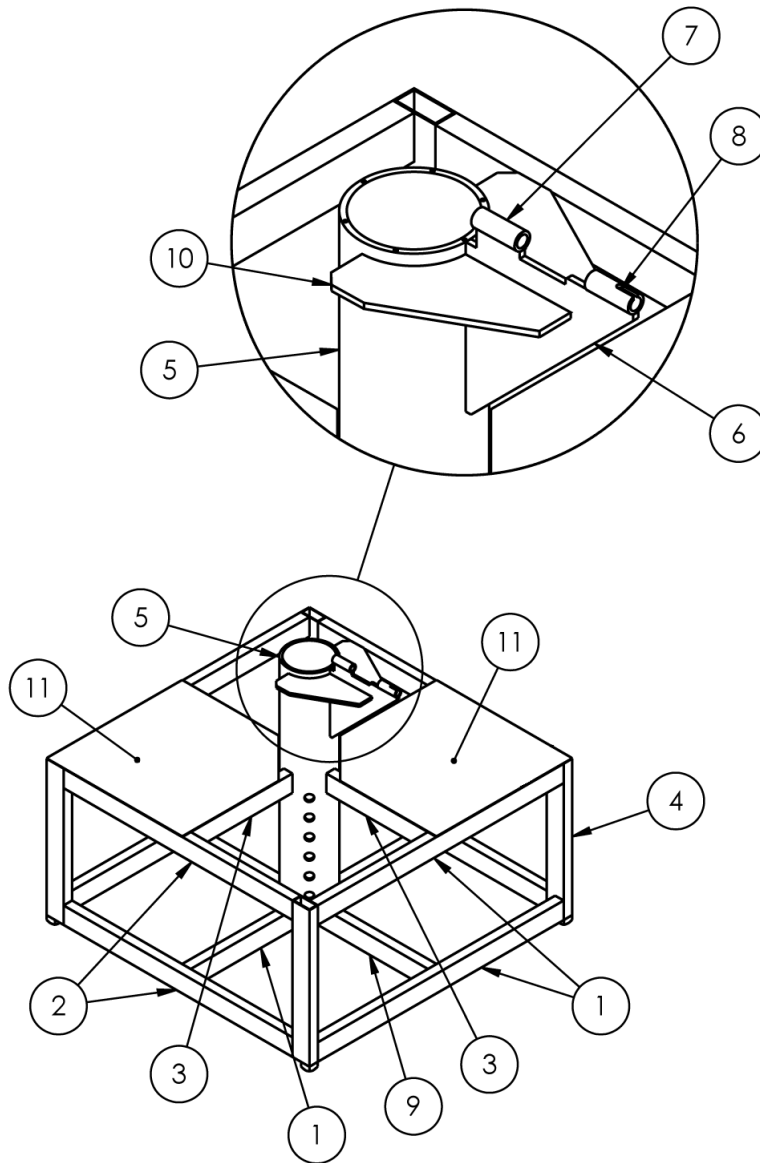


From the library of: Diamond Needle Corp

1346-1021 Upper Support

AAC Drawing Number 1346099 Rev 3

NO.	QTY	PART #	DESCRIPTION
1	1	13452011	PLATE, COLUMN
2	1	1346-1008	SPACER RING
3	1	1346-1015	TUBE, UPPER SUPPORT
4	1	1346-1018	INSIDE SPACER

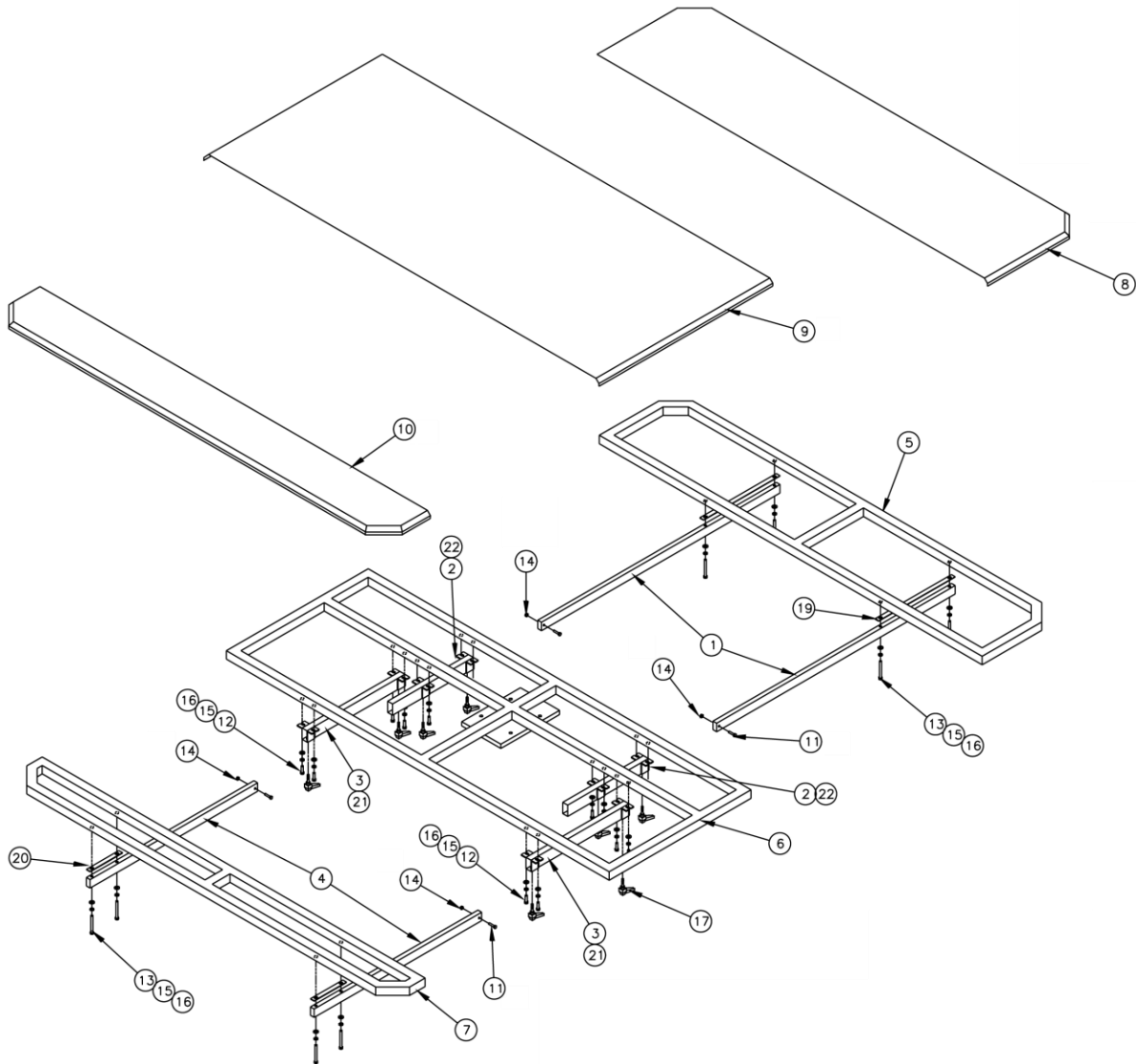


From the library of: Diamond Needle Corp

1346-1000A Build-up Table Base Frame

AAC Drawing Number 1346080 Rev 4

NO.	QTY	PART #	DESCRIPTION
1	5	1346-1001	TUBE, 14GA, 1X2X29L
2	4	1346-1002	TUBE, 14GA, 1X2X27L
3	4	1346-1003	TUBE, 14GA, 1X2X12L
4	4	1346-1003A	TUBE, 14GA, 1X2X16L
5	1	1346-1007	CENTER SUPPORT
6	1	1346-1009	HANDLE GUSSET
7	1	1346-1010	BUSHING, 3/4X2 TUBE
8	1	1346-1011	BUSHING, 3/4X2 TUBE W/SLOT
9	2	1346-1016	TUBE, 14GA, 1X2X14L

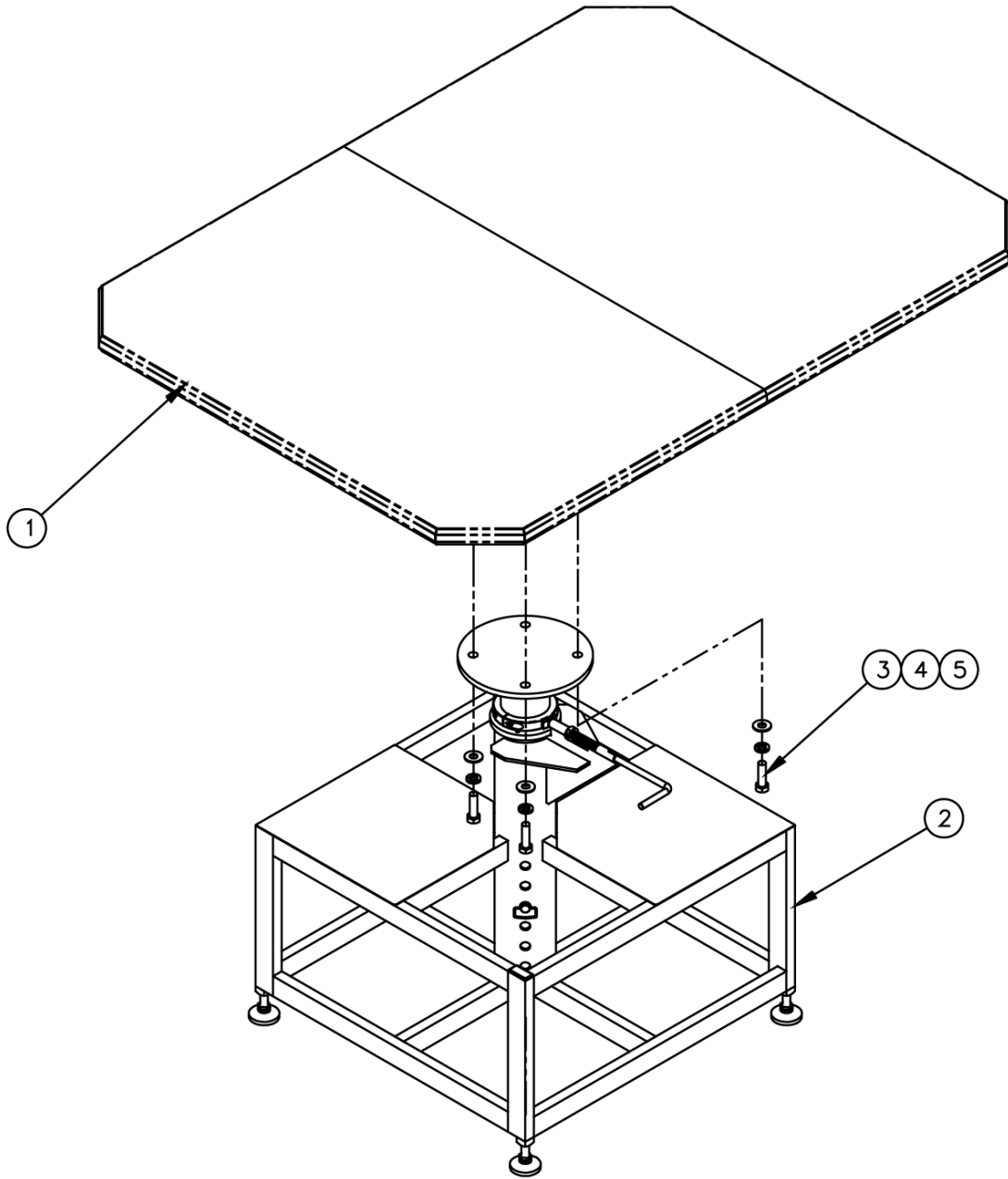


From the library of: Diamond Needle Corp

13461200A Adjustable Table

AAC Drawing Number 298962B Rev 3

NO.	QTY	PART #	DESCRIPTION	NO.	QTY	PART #	DESCRIPTION
1	2	1346A001	Long Adj. Bar	12	16	SSHC010064	Hex Cap Screw
2	2	1346A1202	Short Adj. Tube	13	8	SSHC10160	Hex Cap Screw
3	2	1346A1203	Long Adj. Tube	14	4	NNK1/4-20	Kepl Nut
4	2	1346A002	Short Adj. Bar	15	24	WWF5/16	Flat Washer
5	1	1346002	Right Weldment	16	24	WWL5/16	Lock Washer
6	1	1346A1206	Center Weldment	17	8	TTH32426	Threaded Handle
7	1	1346005	Left Weldment	18	220	ZZZSH-310	2-Sided Tape
8	1	1346A1208	Right Top Plate	19	2	1346A003	Spacer
9	1	1346A1209	Center Top Plate	20	2	1346A004	Spacer
10	1	1346A12010	Left Top Plate	21	2	1346A021	Wear Strip
11	4	SSHC01064	Left Top Plate	22	2	1346A022	Wear Strip

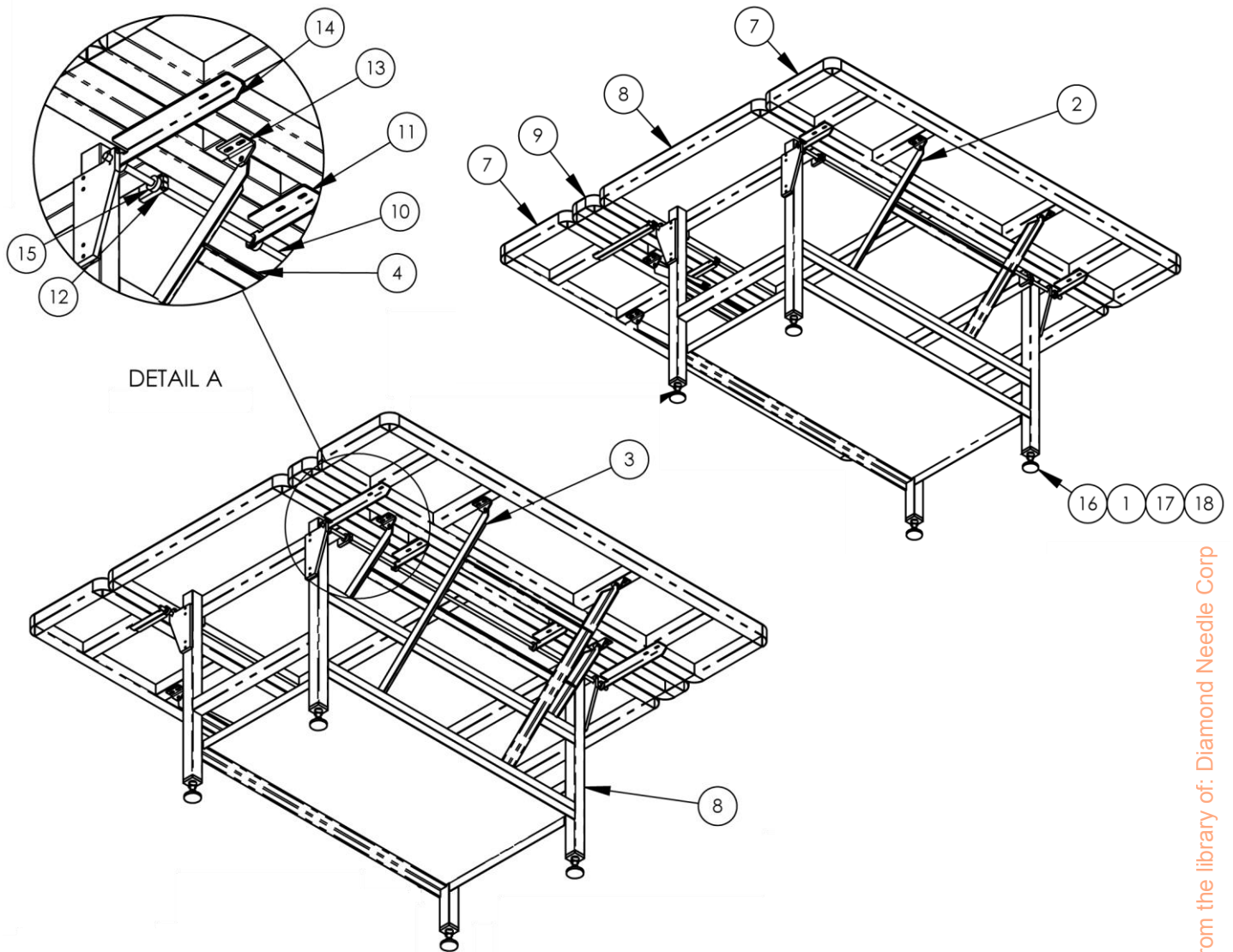


From the library of: Diamond Needle Corp

11346C Crip Size Build-up Table

AAC Drawing Number 192124A Rev 3

NO.	QTY	PART #	DESCRIPTION
1	1	1346006	Table Top Frame Assy.
2	1	1346168	Base Sub Assy.
3	4	SSH45080	Hex Cap Screw
4	4	WWF1/2	Flat Washer
5	4	WWL1/2	Lock Washer

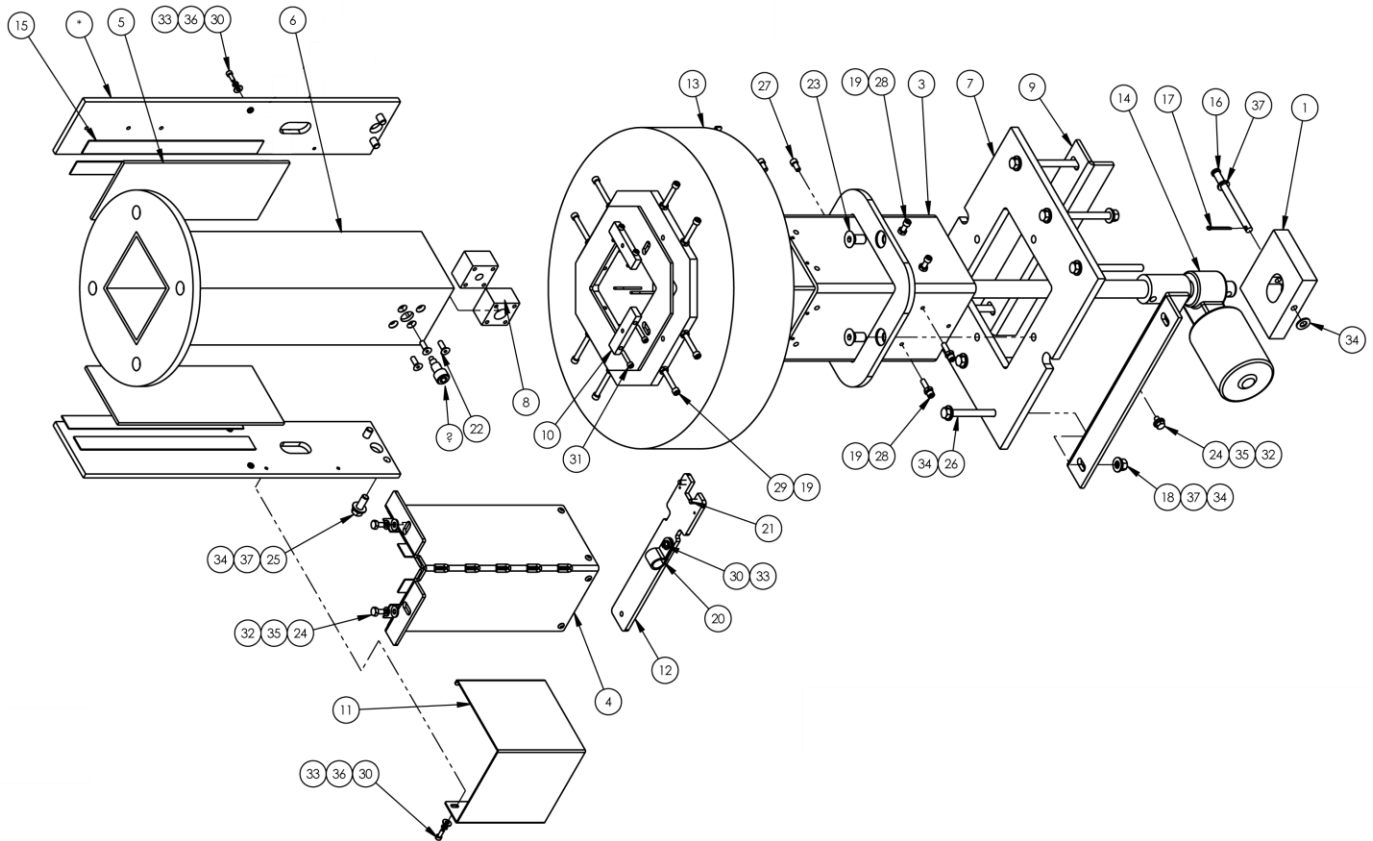


From the library of: Diamond Needle Corp

11346D Drop Leaf Build-up Table

AAC Drawing Number 9001063 Rev 3

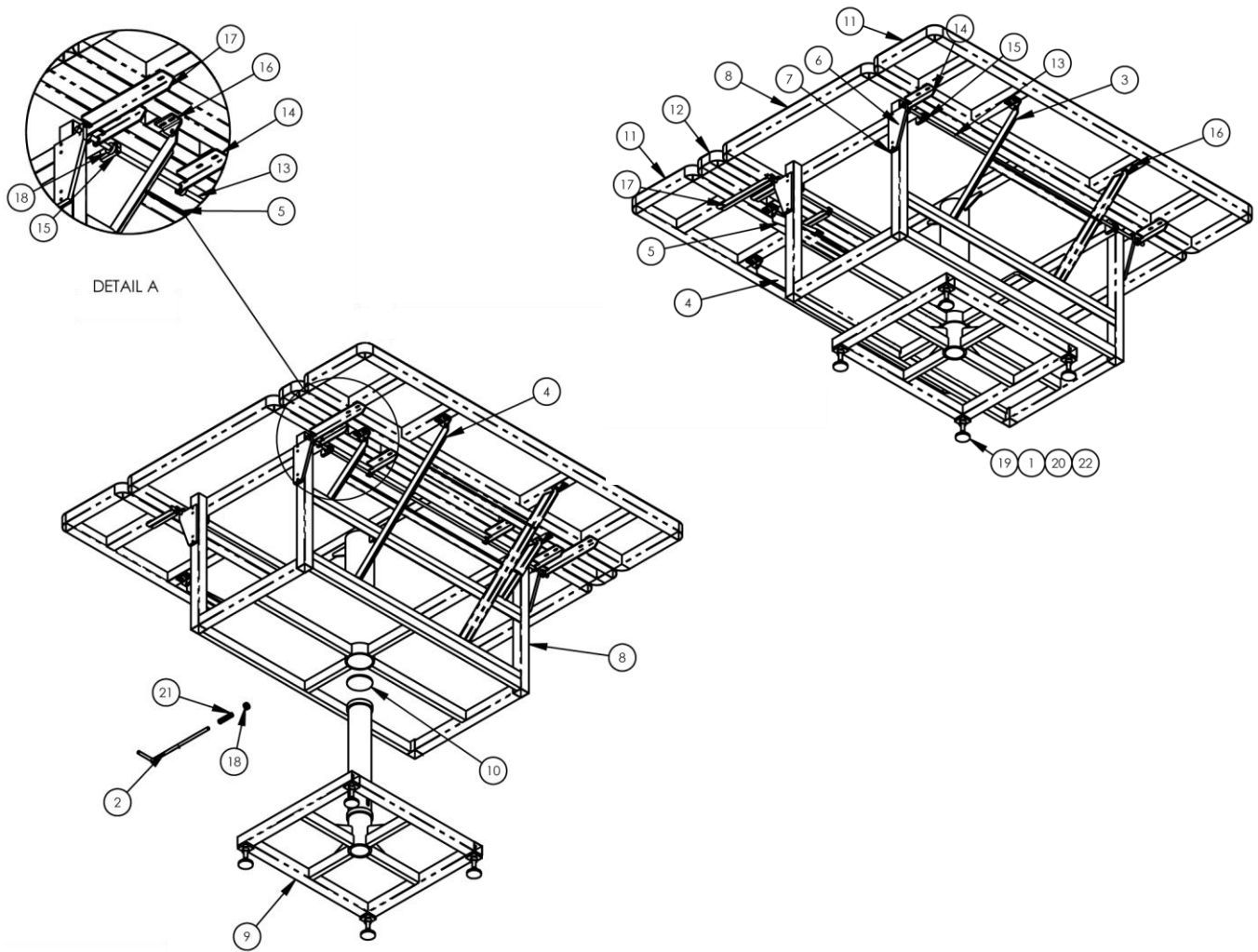
NO.	QTY	PART #	DESCRIPTION	NO.	QTY	PART #	DESCRIPTION
1	4	0411-1063	ROD, THREADED, 5/8-11 X 5	10	2	1346603	SHAFT,PIVOT
2	1	1346015	WLDMT,STRUT,MEDIUM	11	4	1346606	BRKT,PIVOT,SHORT
3	1	1346016	WLDMT,STRUT,LONG	12	4	1346607	BLOCK,CLAMP,PIVOT
4	1	1346019	WLDMT,STRUT,SHORT	13	6	1346608	CLIP,PIVOT
5	4	1346025	BLOCK,CLAMP,PIVOT,VERT	14	2	1346609	BRKT,PIVOT,LONG
6	2	1346027	SPACER, PIVOT BLOCK,VERT	15	10	CCCL8F	CLAMP COLLAR- 1/2
7	2	1346200	TABLE,DROP LEAF,16"	16	4	MML-2	LEVELING PAD, 5/8-11
8	1	1346300	WELDMENT,DROP LEAF,MED	17	4	NNSH5/8-11	NUT, SQUARE, 5/8-11
9	1	1346400	WELDMENT,DROP LEAF,SM	18	4	WWL5/8	3/8 LOCK WASHER



1345016 Square Table Lift Assembly

AAC Drawing Number 1345016 Rev 0

NO.	QTY	PART #	DESCRIPTION	NO.	QTY	PART #	DESCRIPTION
1	1	1345001	PLATE, ACTUATOR	21	2	SSBC01048	1/4-20 X 3/4 BUT HEAD
2	2	1345002	PLATE,SIDE SUPPORT	22	8	SSFC01048	1/4-20 X 3/4 FLAT ALLEN
3	1	1345006	COLUMN, HUB ASSY.	23	4	SSFC45064	1/2-13 X 1 BK FLAT ALLEN
4	1	1345008	ADJUSTING BRACKET	24	4	SSHC01032	1/4-20 X 1/2 HEX HEAD
5	2	1345009	PLATE, SLIDE	25	4	SSHC25064	3/8-16 X 1 HEX HEAD
6	1	1345012	COLUMN.ASSY	26	6	SSHC25288	3/8-16 X 4-1/2 HEX HEAD
7	1	1345013	PLATE, COLUMN SUPPORT	27	6	SSSC01032	1/4-20 X 1/2 SOC CAP
8	2	1345015	PLATE,ACTUATOR MNTNG,UPR	28	4	SSSC01064	1/4-20 X 1 SOC CAP
9	2	1345017	SUPPORT, COLUMN HUB	29	8	SSSC01256	1/4-20 X 4 SOC CAP
10	2	1345019	MNT,ADJ BRKT	30	7	SSSC98032	# 10-32 X 1/2 SOC CAP
11	1	1345020	COVER, ACTUATOR	31	4	SSSC98064	# 10-32 X 1 SOC CAP
12	1	13452024	GUIDE ASSY,CABLE	32	4	WWFS1/4	WASHER FLAT, 1/4
13	1	EERHU-B08_PBD1	SLIP RING ASSY,15A,8 COND	33	7	WWFS10	WASHER, FLAT #10
14	1	MM85200-12.5	ACTUATOR,ELEC,220V,12.5"	34	17	WWFS3/8	WASHER, FLAT, 3/8
15	4 FT	MM9495LE	TAPE,ADHESIVE,W/CARRIER	35	4	WWL1/4	1/4 LW
16	1	MM98306A295	PIN,CLEVIS,3/8X4-1/2	36	6	WWL10	#10 LW
17	1	MM98338A445	COTTER PIN, 1/8 X 2 1/2	37	11	WWL3/8	3/8 LW
18	6	NNH3/8-16	3/8-16 HEX NUT	38	2	1345014	PIN,COLUMN
19	12	NNJ1/4-20	1/4-20 HEX JAM NUT	39	1	1345022	RETAINING SQUARE
20	1	PPP2217	WIRE CLAMP, .3371.D.	40	1	1345042	WIRE CLAMP, SLIP RING

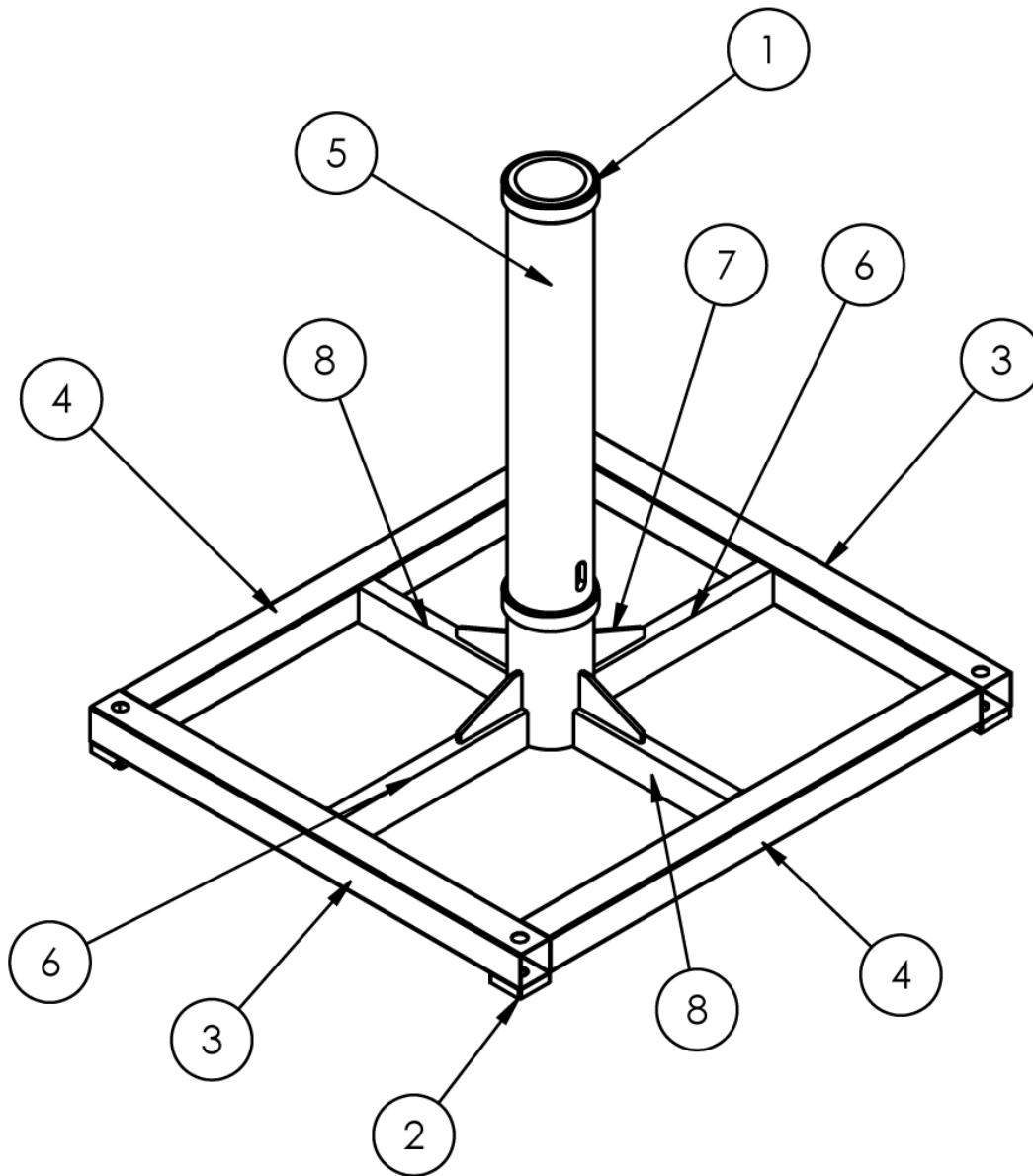


From the library of: Diamond Needle Corp

11346DR Rotating Drop leaf Build-up Table

AAC Drawing Number 9002704 Rev 0

NO.	QTY	PART #	DESCRIPTION	NO.	QTY	PART #	DESCRIPTION
1	4	0411-1063	ROD, THREADED, 5/8-11 X 5	12	1	1346400	WELDMENT,DROP LEAF,SM
2	1	1346-1012	HANDLE W / KEY	13	2	1346603	SHAFT,PIVOT
3	1	1346015	WLDMT,STRUT,MEDIUM	14	6	1346606	BRKT,PIVOT,SHORT
4	1	1346016	WLDMT,STRUT,LONG	15	4	1346607	BLOCK,CLAMP,PIVOT
5	1	1346019	WLDMT,STRUT,SHORT	16	6	1346608	CLIP,PIVOT
6	4	1346025	BLOCK,CLAMP,PIVOT,VERT	17	2	1346609	BRKT,PIVOT,LONG
7	2	1346027	SPACER, PIVOT BLOCK,VERT	18	11	CCCL8F	CLAMP COLLAR- 1/2
8	1	1346047	WELDMENT,DROP LEAF,ROT.	19	4	MML-2	LEVELING PAD, 5/8-11
9	1	1346060	BASE WELDMENT, ROTATING	20	4	NNSH5/8-11	NUT, SQUARE, 5/8-11
10	1	1346061	DISC, BEARING	21	1	RRLC105J10	SPRING,COMP .105X.75X3.0
11	2	1346200	TABLE,DROP LEAF,16"	22	4	WWL5/8	3/8 LOCK WASHER

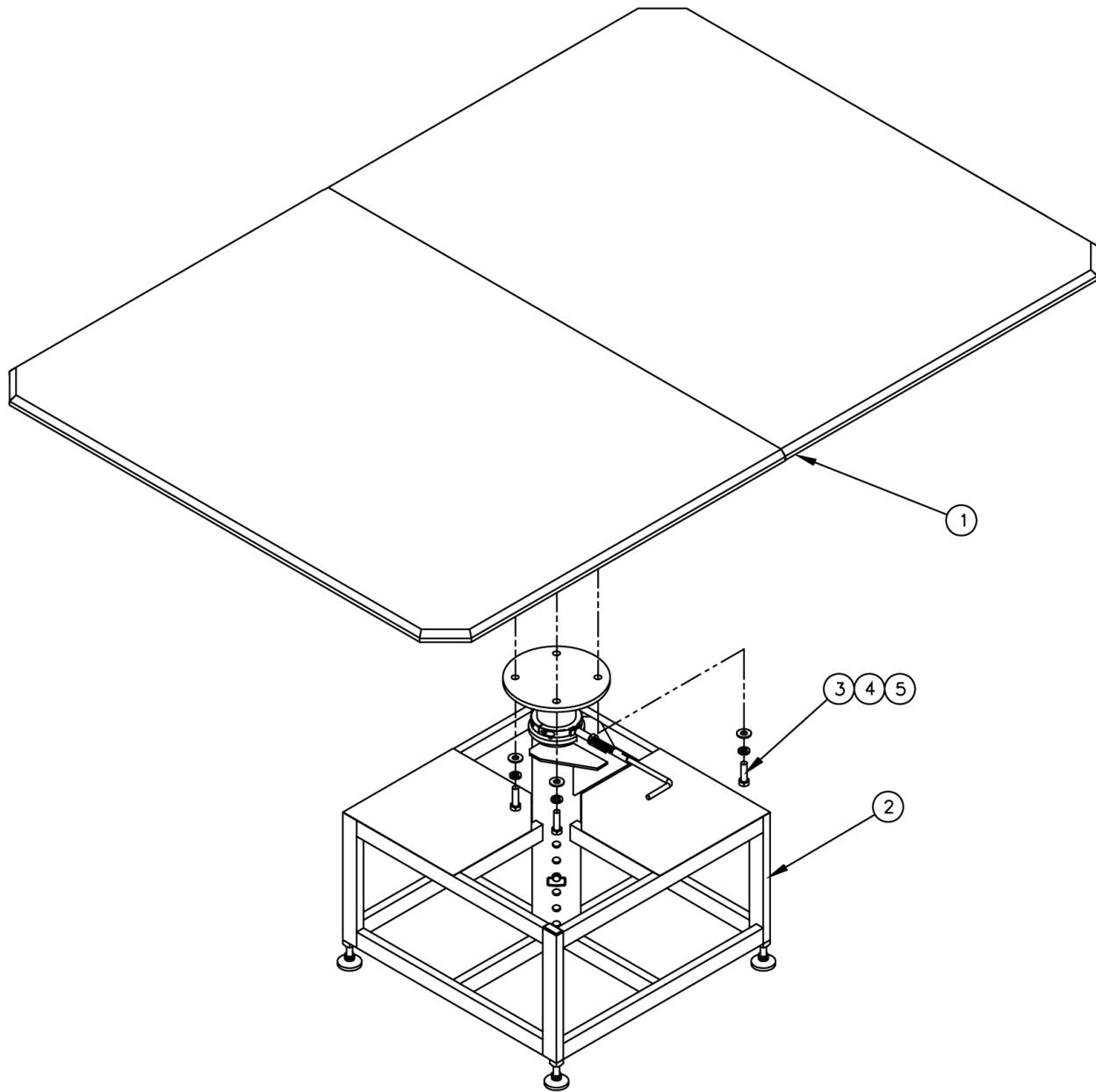


From the library of: Diamond Needle Corp

1346060 Rotating Base Weldment

AAC Drawing Number 1346060 Rev 0

NO.	QTY	PART #	DESCRIPTION
1	2	1346-1018	INSIDE SPACER
2	4	1346023	PLATE, TAPPED 5/8-11
3	2	1346055	TUBE, 2X2X28L
4	2	1346056	TUBE, 2X2X28L
5	1	1346057	COLUMN, 4.0 OD X 30.75
6	2	1346058	CRS TUBE, 1X2X12
7	4	1346059	GUSSET, 2 X 4 X 1/4
8	2	1346062	CRS TUBE, 1X2X10

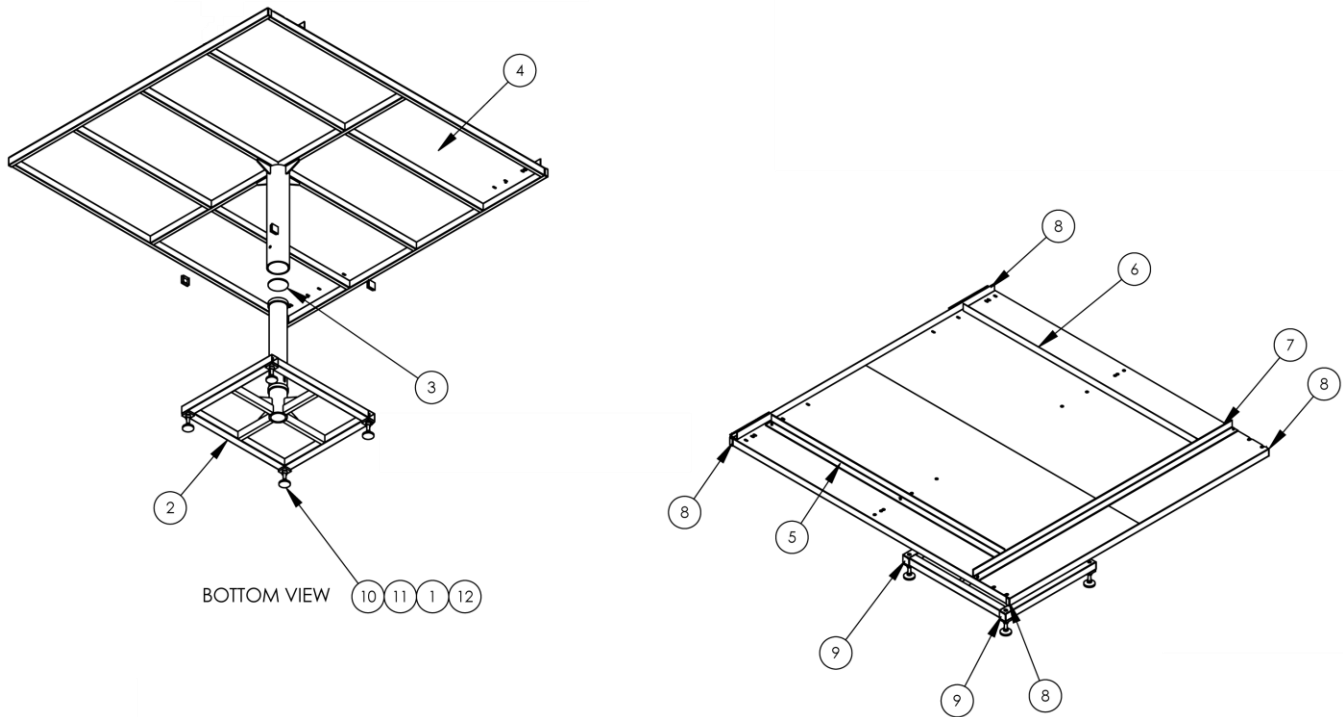


From the library of: Diamond Needle Corp

11346F Full Size Build-up Table

AAC Drawing Number 192054A Rev 6

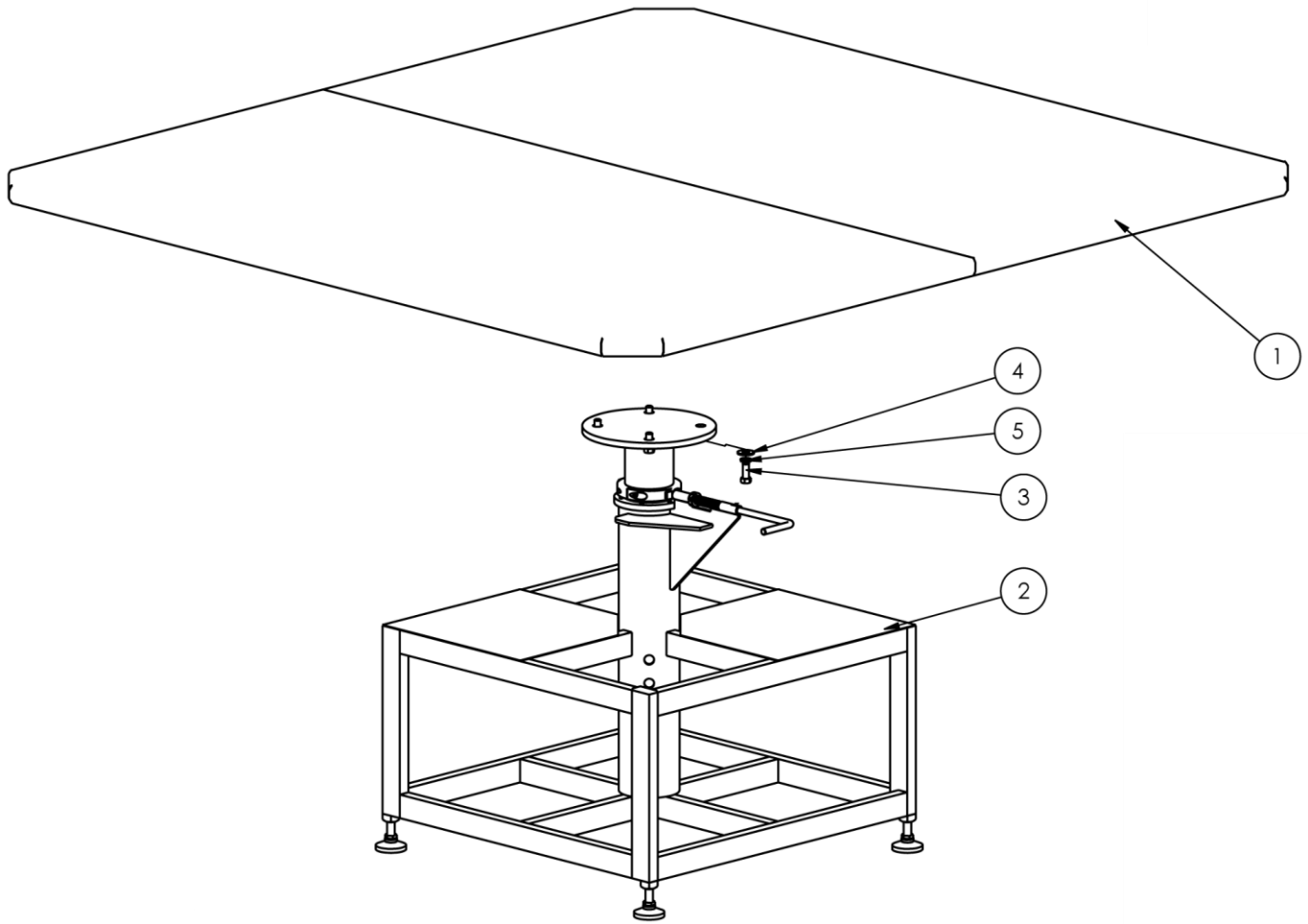
NO.	QTY	PART #	DESCRIPTION
1	1	1345080	Table Top Frame Assy.
2	1	1346168	Base Sub Assy.
3	4	SSHC45080	Hex Cap Screw
4	4	WWF1/2	Flat Washer
5	4	WWL1/2	Lock Washer



11346FE Foam Encap Build-up Table

AAC Drawing Number 9002762 Rev 0

NO.	QTY	PART #	DESCRIPTION
1	4	0411-1063	ROD, THREADED, 5/8-11 X 5
2	1	1346060	BASE WELDMENT, ROTATING
3	1	1346061	DISC, BEARING
4	1	1346065	TABLE, FOAM BED ASSEMBLY
5	1	1346073	SIDE STOP, LEFT, FE
6	1	1346074	SIDE STOP, RIGHT, FE
7	1	1346075	FRONT STOP, FE
8	4	MM132-1496	PLUG 1 X 2
9	4	MM132-2X2	END CAP, 2x2 10-14GA
10	4	MML-2	LEVELING PAD, 5/8-11
11	4	NNSH5/8-11	NUT, SQUARE, 5/8-11
12	4	WWL5/8	3/8 LOCK WASHER

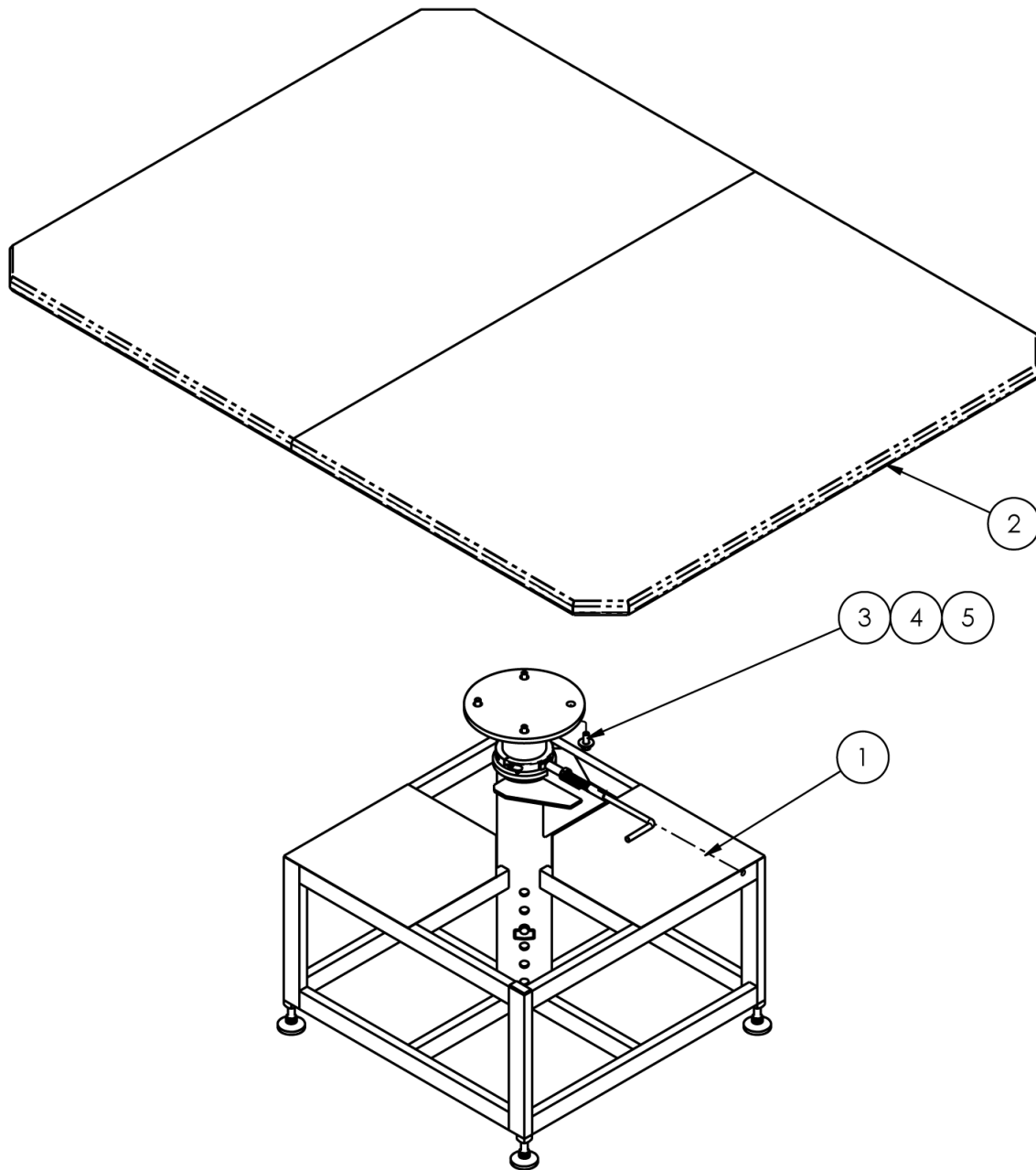


From the library of: Diamond Needle Corp

11346K King Size Build-up Table

AAC Drawing Number 9003835 Rev 6

NO.	QTY	PART #	DESCRIPTION
1	1	1345087	TABLE TOP, KING SIZE
2	1	1346168	BASE SUB ASSEMBLY
3	4	SSH45080	1/2-13X1-1/4 HEX CAP
4	4	WWF1/2	WASHER, FLAT, 1/2
5	4	WWL1/2	1/2 LOCK WASHER

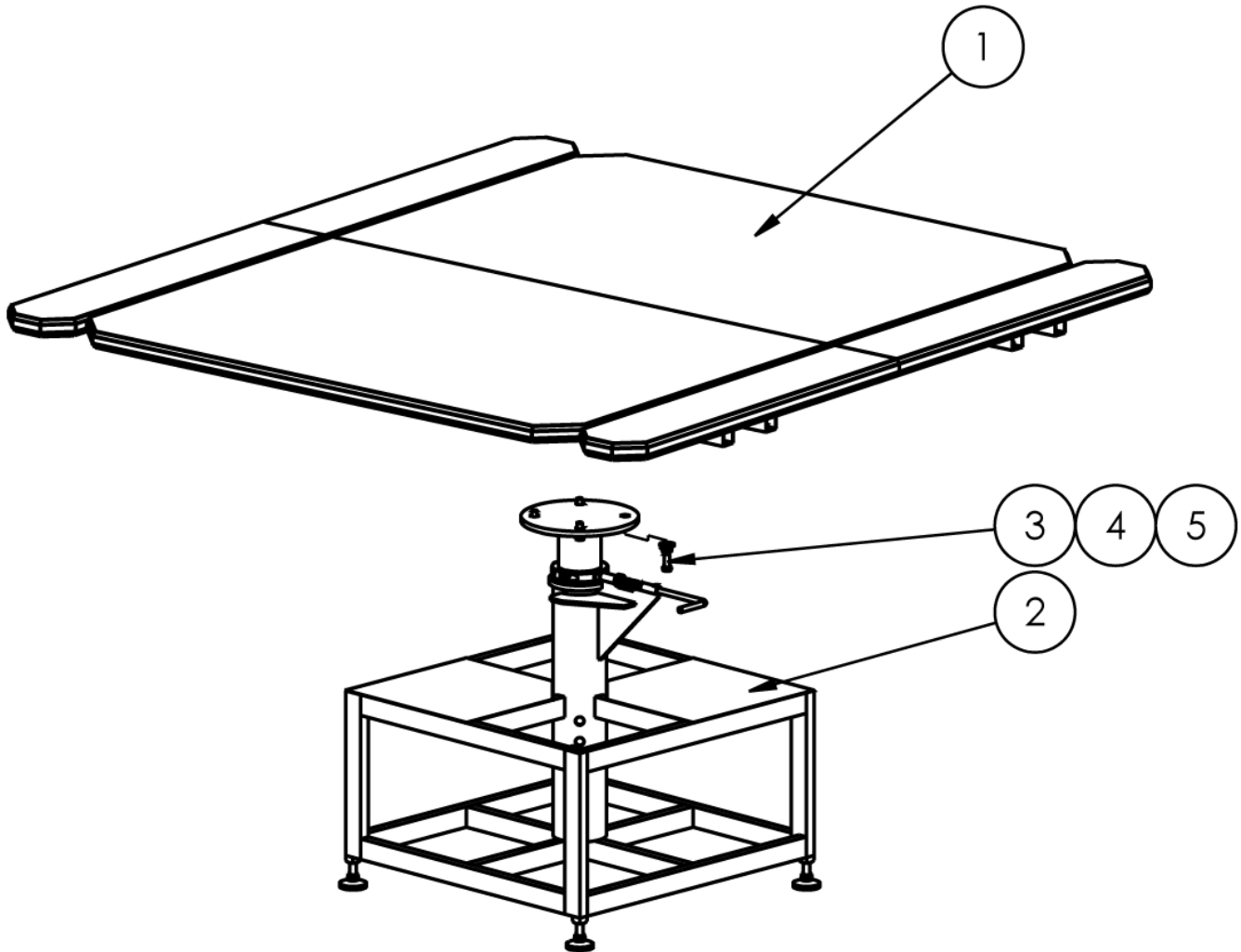


From the library of: Diamond Needle Corp

11346Q Queen Size Build-up Table

AAC Drawing Number 1346094 Rev 7

NO.	QTY	PART #	DESCRIPTION
1	1	1346168	BASE SUB ASSEMBLY
2	1	13451200	TABLE TOP ASSY, QUEEN
3	4	SSHC45080	1/2-13X1-1/4 HEX CAP
4	4	WWF1/2	WASHER, FLAT, 1/2
5	4	WWL1/2	1/2 LOCK WASHER

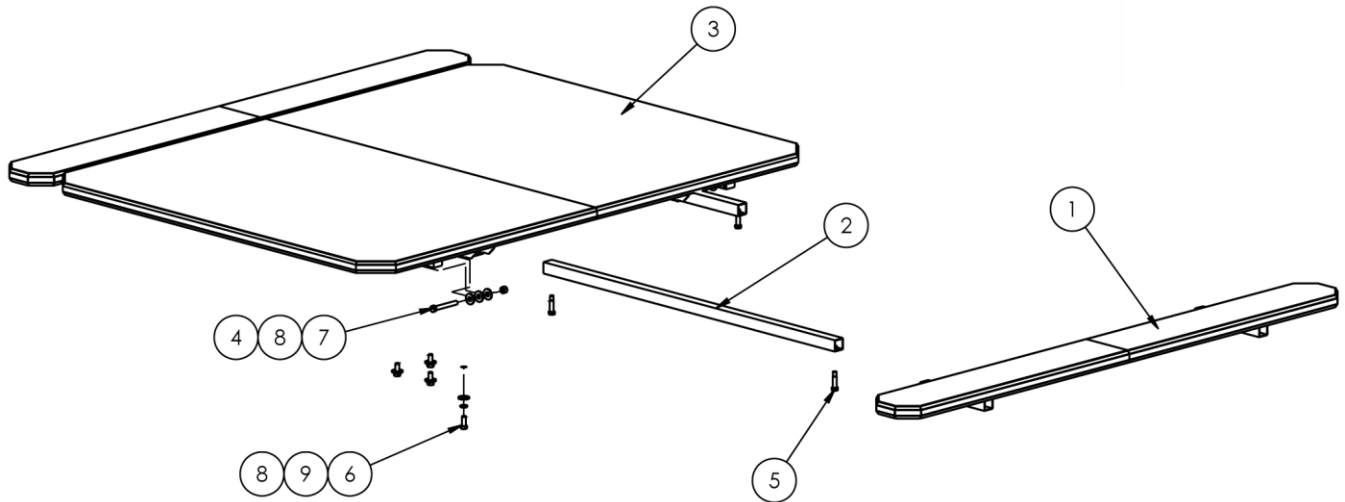


From the library of: Diamond Needle Corp

11346QK Queen / King Build-up Table

AAC Drawing Number 9002566 Rev X

NO.	QTY	PART #	DESCRIPTION
1	1	1346038	TABLE TOP, Q/K ADJ
2	1	1346168	BASE SUB ASSEMBLY
3	4	SSHC45080	1/2-13X1-1/4 HEX CAP
4	4	WWF1/2	WASHER,FLAT,1/2
5	4	WWL1/2	1/2 LOCK WASHER

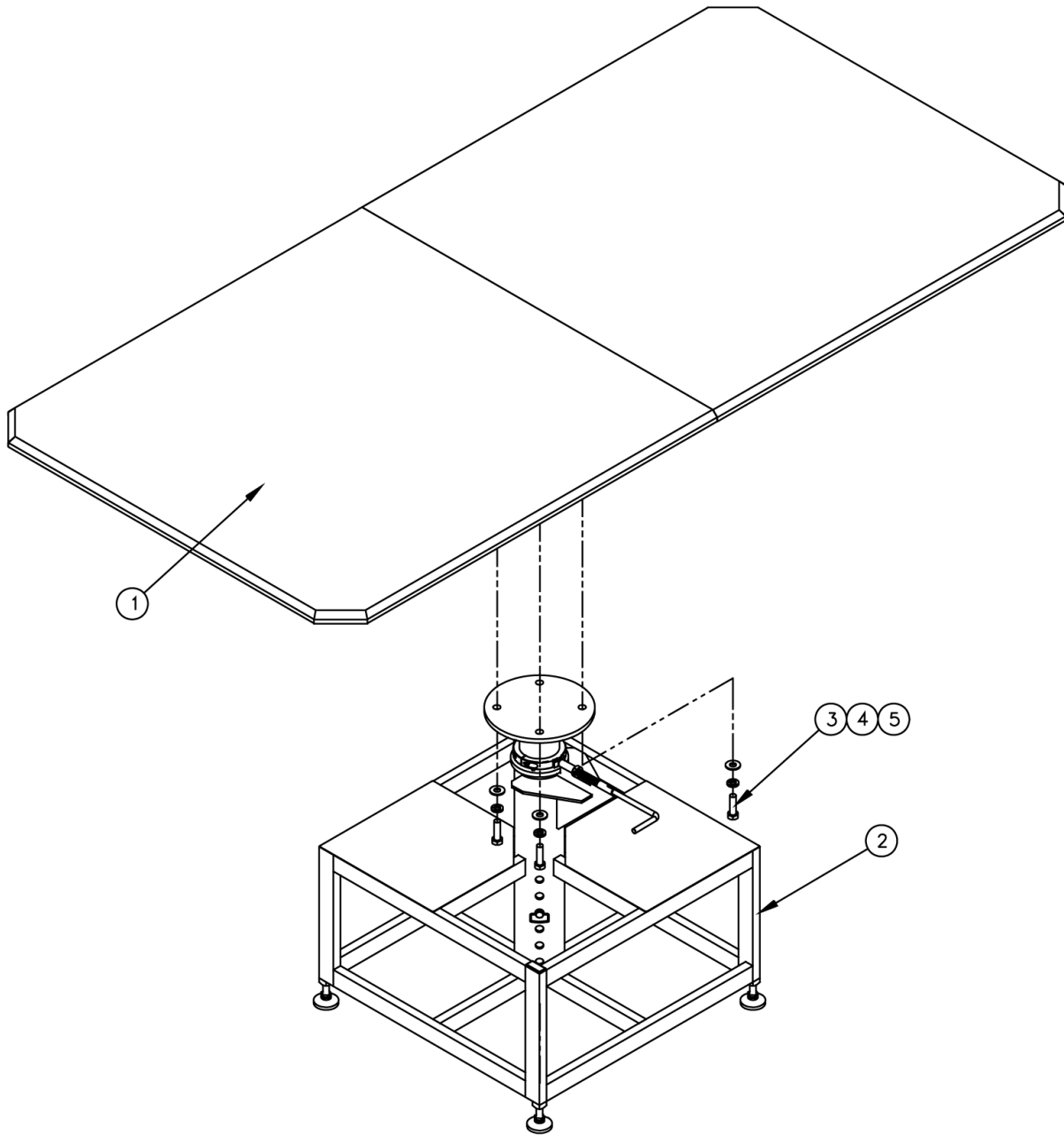


From the library of: Diamond Needle Corp

1346038 Queen / King Table Top

AAC Drawing Number 1346038 Rev 1

NO.	QTY	PART #	DESCRIPTION
1	2	1346032	TABLE LEAF, 8 X 80
2	4	1346033	SUPPORT, TABLE
3	1	1346036	TABLE TOP ASSY,Q/K
4	4	NNE1/2-13	NUT,NYLOCK,1/2-13
5	8	SSAS032096	SHOULDER BOLT 1/2 X .1.50
6	4	SSHC45080	1/2-13X1-1/4 HEX CAP
7	4	SSHC45256	1/2-13X4 HEX CAP
8	16	WWF1/2	WASHER,FLAT,1/2
9	4	WWL1/2	1/2 LOCK WASHER



From the library of: Diamond Needle Corp

11346TW Twin Size Build-up Table

AAC Drawing Number 192057A Rev 6

NO.	QTY	PART #	DESCRIPTION
1	1	1345091	Table Top, Twin
2	1	1346168	Base Sub Assy.
3	4	SSHC45080	Hex Cap Screw
4	4	WWF1/2	Flat Washer
5	4	WWL1/2	Lock Washer

Atlanta Attachment Company (AAC) Statement of Warranty

Manufactured Products

Atlanta Attachment Company warrants manufactured products to be free from defects in material and workmanship for a period of eight hundred (800) hours of operation or one hundred (100) days whichever comes first. Atlanta Attachment Company warrants all electrical components of the Serial Bus System to be free from defects in material or workmanship for a period of thirty six (36) months.

Terms and Conditions:

- AAC Limited Warranty becomes effective on the date of shipment.
- AAC Warranty claims may be made by telephone, letter, fax or e-mail. All verbal claims must be confirmed in writing.
- AAC reserves the right to require the return of all claimed defective parts with a completed warranty claim form.
- AAC will, at its option, repair or replace the defective machine and parts upon return to AAC.
- AAC reserves the right to make the final decision on all warranty coverage questions.
- AAC warranty periods as stated are for eight hundred (800) hours or one hundred (100) days whichever comes first.
- AAC guarantees satisfactory operation of the machines on the basis of generally accepted industry standards, contingent upon proper application, installation and maintenance.
- AAC Limited Warranty may not be changed or modified and is not subject to any other warranty expressed or implied by any other agent, dealer, or distributor unless approved in writing by AAC in advance of any claim being filed.

What Is Covered

- Electrical components that are not included within the Serial Bus System that fail due to defects in material or workmanship, which are manufactured by AAC are covered for a period of eight hundred (800) hours.
- Mechanical parts or components that fail due to defects in material or workmanship, which are manufactured by AAC.
- Purchased items (sewing heads, motors, etc.) will be covered by the manufacturers (OEM) warranty.
- AAC will assist in the procurement and handling of the manufacturers (OEM) claim.

What Is Not Covered

- Parts that fail due to improper usage, lack of proper maintenance, lubrication and/or modification.
- Damages caused by; improper freight handling, accidents, fire and issues resulting from unauthorized service and/or personnel, improper electrical, plumbing connections.
- Normal wear of machine and parts such as Conveyor belts, "O" rings, gauge parts, cutters, needles, etc.
- Machine adjustments related to sewing applications and/or general machine operation.
- Charges for field service.
- Loss of time, potential revenue, and/or profits.
- Personal injury and/or property damage resulting from the operation of this equipment.

Declaración de Garantía

Productos Manufacturados

Atlanta Attachment Company garantiza que los productos de fabricación son libres de defectos de material y de mano de obra durante un periodo de ochocientos (800) horas de operación o cien (100) días cual llegue primero. Atlanta Attachment Company garantiza que todos los componentes del Serial bus son libres de defectos de material y de mano de obra durante un periodo de treinta y seis (36) meses.

Términos y Condiciones:

- La Garantía Limitada de AAC entra en efecto el día de transporte.
- Reclamos de la Garantía de AAC pueden ser realizados por teléfono, carta, fax o correo electrónico. Todo reclamo verbal tiene que ser confirmado vía escrito.
- AAC reserva el derecho para exigir el retorno de cada pieza defectuosa con un formulario de reclamo de garantía.
- AAC va, según su criterio, reparar o reemplazar las máquinas o piezas defectuosas devueltas para AAC.
- AAC reserva el derecho para tomar la decisión final sobre toda cuestión de garantía.
- Las garantías de AAC tiene una validez de ochocientas (800) horas o cien (100) días cual llega primero.
- AAC garantiza la operación satisfactoria de sus máquinas en base de las normas aceptadas de la industria siempre y cuando se instale use y mantenga de forma apropiada.
- La garantía de AAC no puede ser cambiado o modificado y no está sujeto a cualquier otra garantía implicado por otro agente o distribuidor menos al menos que sea autorizado por AAC antes de cualquier reclamo.

Lo Que Está Garantizado

- Componentes eléctricos que no están incluidos dentro del sistema Serial Bus que fallen por defectos de materiales o de fabricación que han sido manufacturados por AAC son garantizados por un periodo de ochocientas (800) horas.
- Componentes mecánicos que fallen por defectos de materiales o de fabricación que han sido manufacturados por AAC son garantizados por un periodo de ochocientas (800) horas.
- Componentes comprados (Motores, Cabezales,) son protegidos debajo de la garantía del fabricante.
- AAC asistirá con el manejo de todo reclamo de garantía bajo la garantía del fabricante.

Lo Que No Está Garantizado

- Falla de repuestos al raíz de uso incorrecto, falta de mantenimiento, lubricación o modificación.
- Daños ocurridos a raíz de mal transporte, accidentes, incendios o cualquier daño como resultado de servicio por personas no autorizados o instalaciones incorrectas de conexiones eléctricas o neumáticas.
- Desgaste normal de piezas como correas, anillos de goma, cuchillas, agujas, etc.
- Ajustes de la máquina en relación a las aplicaciones de costura y/o la operación en general de la máquina.
- Gastos de Reparaciones fuera de las instalaciones de AAC
- Pérdida de tiempo, ingresos potenciales, y/o ganancias.
- Daños personales y/o daños a la propiedad como resultado de la operación de este equipo.



Atlanta Attachment Company
362 Industrial Park Drive
Lawrenceville, GA 30046
770-963-7369
www.atlatt.com

Printed in the USA

From the library of: Diamond Needle Corp